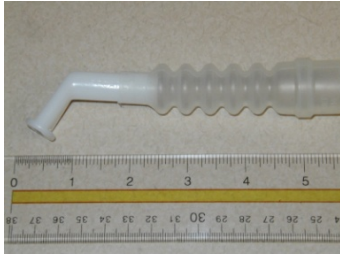


Commercial Mouthpiece Breathing Circuit

Parts

Circuit Parts

A



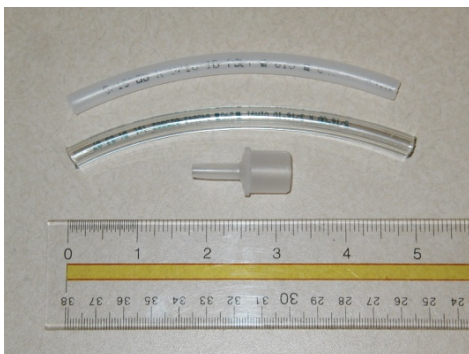
B



C



D



Example A:

- 1.) 15 mm Angled Mouthpiece
Respironics Cat. No. 1004524
- 2.) 22 mm X 10 mm X 2.5 in Flex tube
Puritan-Bennett P/N 4002446-00
(Also available through Respironics
Cat. No. CO6483)

Example B:

- 1.) 15 mm Angled Mouthpiece
- 2.) 10 mm ID Silicone Rubber Connector
Instrumentation Indus. P/N PF1010
- 3.) 22 mm X 15 mm X 2 in. flex tube
Respironics Cat. No. 1006043

Example C:

- 1.) 15 mm Angled Mouthpiece
- 2.) 15 mm OD X 22 mm ID
Adapter
Ballard Medical Cat. No 112

Example D:

- 1.) 22 mm OD Angled Mouthpiece
Respironics Cat. No. FC06566
- 2.) 22 mm ID Silicon Flex
Adaptor
Tri-anim P/N: 301-9000

"Straw Type" Mouthpiece

- 1.) No. 4 Size Endotracheal Tube Adapter
Anesthesia Associates P/N: 00-309-4
(Endotracheal tube adapters up to size
6 have been successfully used)
- 2.) 3/16 in. ID vinyl or polyethylene
tubing lengths cut cut according to
patient's need.

Flexible Gooseneck Microphone Stand Mouthpiece Support Arm

Mouthpiece circuit support arms can be constructed using flexible gooseneck microphone stands and accessories. These pieces are available either through from local or online music equipment supply companies.



Microphone clips can be used to support the single limb breathing circuit by securing the exhalation valve body within the microphone clip.

A variety of mouthpiece alternative can be connected directly to the exhalation valve body.



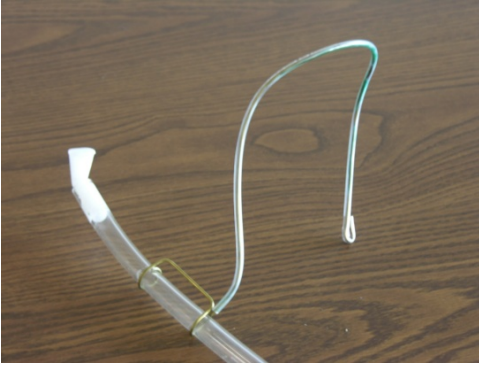
A variety of vice clamp or fixed mounts can be used to mount the gooseneck on either a wheelchair or ambulatory aid.

Gooseneck microphone arms are available in 6, 13 and 19 inch lengths. These stands should be used as vertical support arms only.



Examples of microphone support arm applications for both ambulatory aids and wheelchairs.

Collar Mounted mouthpiece Breathing Circuits



A 3 ft length of 3/32 inch copper coated gas welding rod can be used to form a collar and clamp to support a 1/2 in. ID X 5/8 in. OD vinyl tube with 15 mm angled mouthpiece.

1/8 in ID X 3/16 in OD vinyl tubing can be used as a shroud over the collar portion of the rod.

A 15 mm OD X 22 mm ID adapter is inserted into the opposite end of the 1/2 inch vinyl tube.



The mouthpiece breathing circuit can then be connected to the exhalation valve body of the single limb ventilator breathing circuit.



This simple collar supported mouthpiece breathing circuit assembly can be easily and inexpensively made. It provides the user with a minimum amount of support arm equipment while maintaining a proximal mouthpiece position with upper body range of motion.